

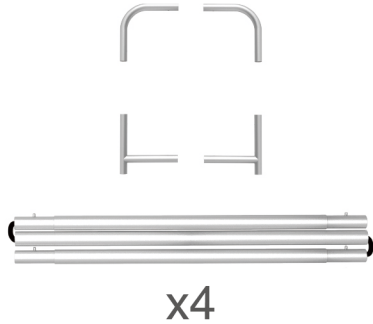
INSTRUCTION



10X10FT-BOOTH-D

STEPS

(1) Hardware

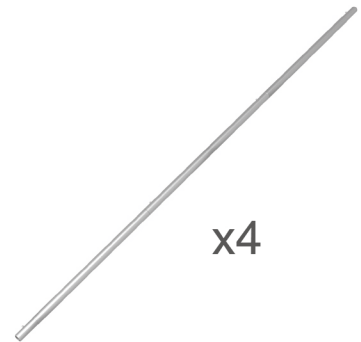
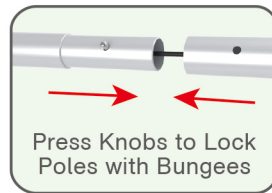
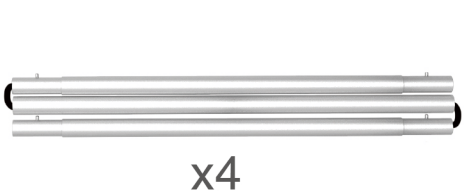


(2) Printed Graphic Fabric Banner (Optional)



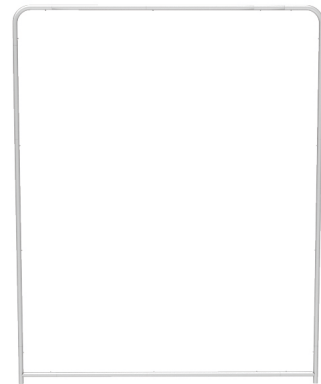
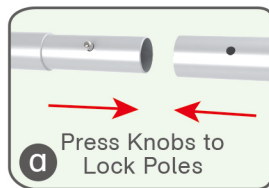
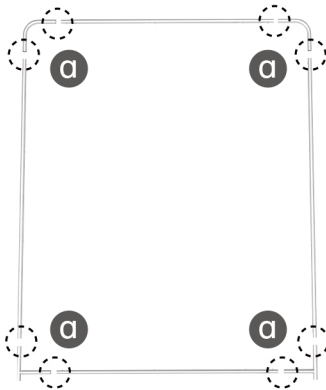
STEP 01

Connect to make long poles according to labelings.



STEP 02

Connect long poles with corner poles according to labelings.



STEP 03

Slide fabric banner on frame from top and zip up at bottom.



STEPS

(1) Hardware

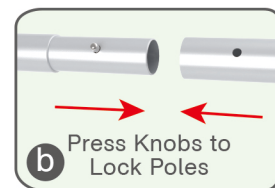
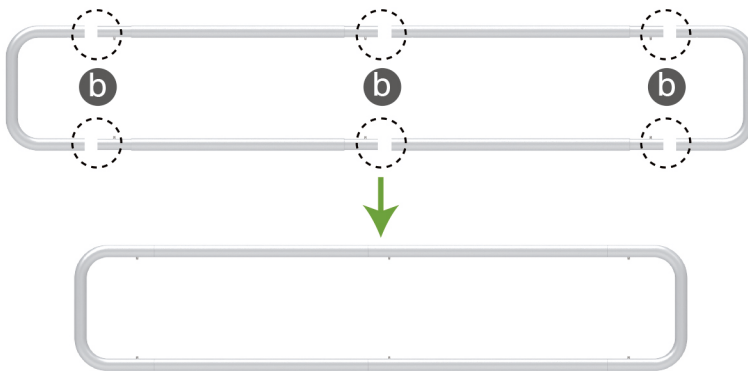


(2) Printed Graphic Fabric Banner (Optional)



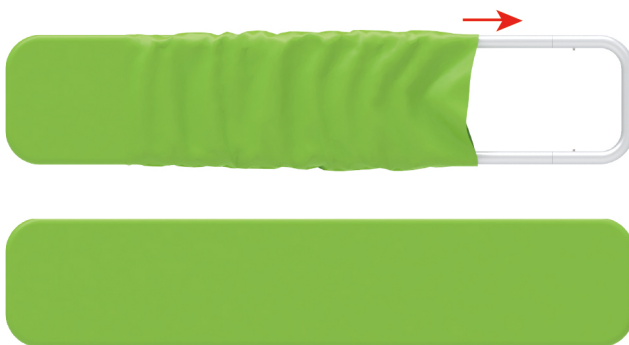
STEP 01

Connect poles according to labelings.



STEP 02

Slide fabric banner on frame from left and zip up at right.



Booth Set Assembly



(1) Base



(2) 180° C-Shaped Clip

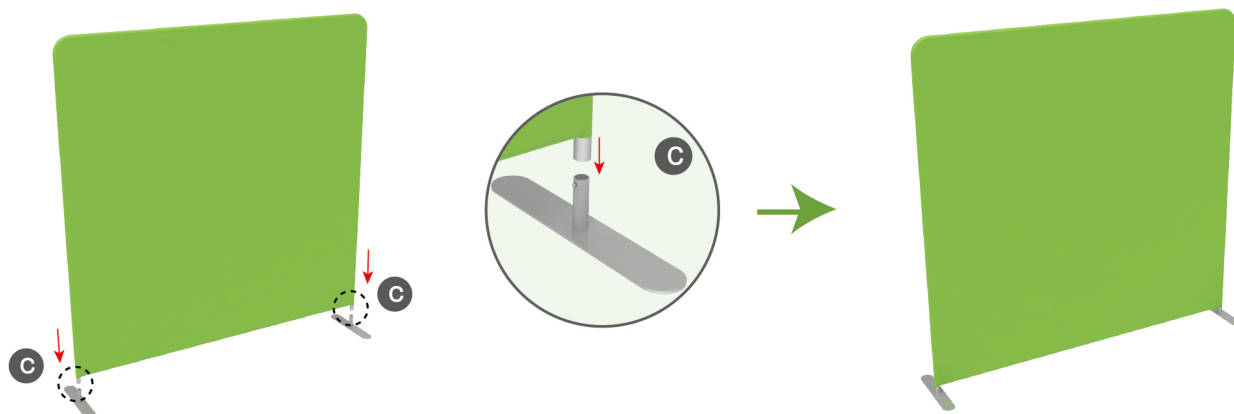


(3) LED Light & Clip

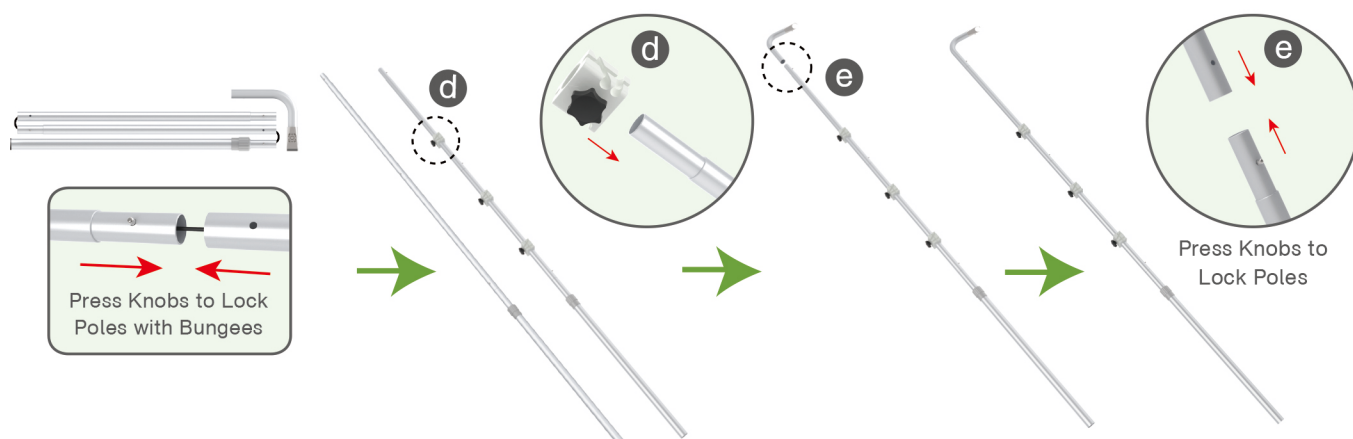


STEPS

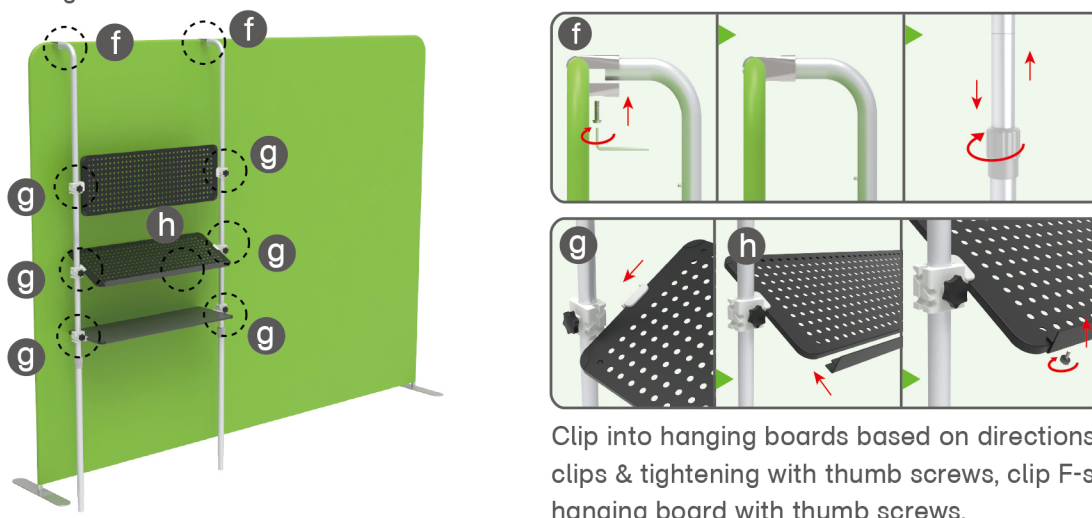
STEP 01 Insert display stands onto feet by pressing their knobs.

**STEP 02**

Connect to make long poles according to labelings, slide three-way clips onto long poles, insert short curved poles onto their top by pressing their knobs.

**STEP 03**

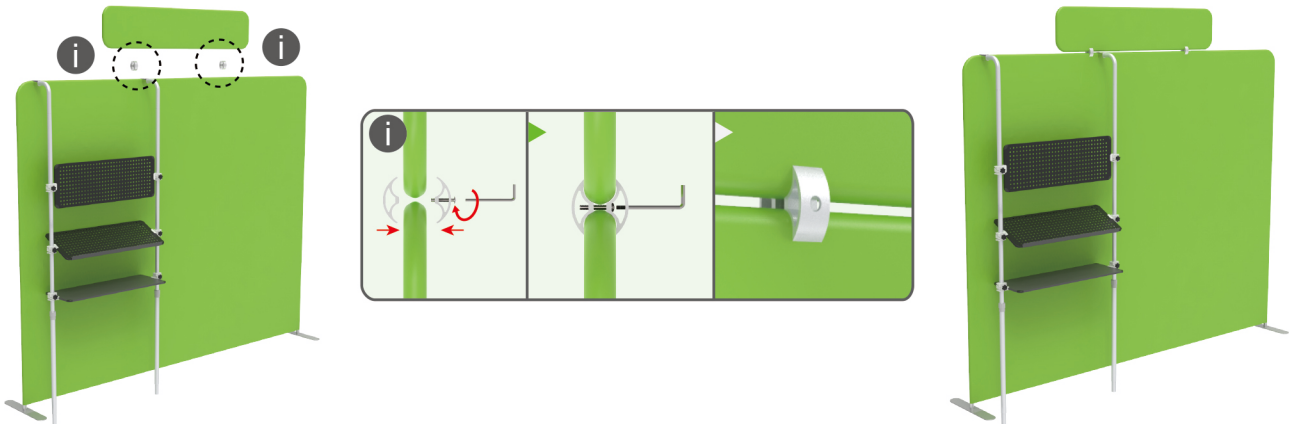
Connect long poles and display stand with clamps, adjust their height properly as needed by loosening and tightening screws.



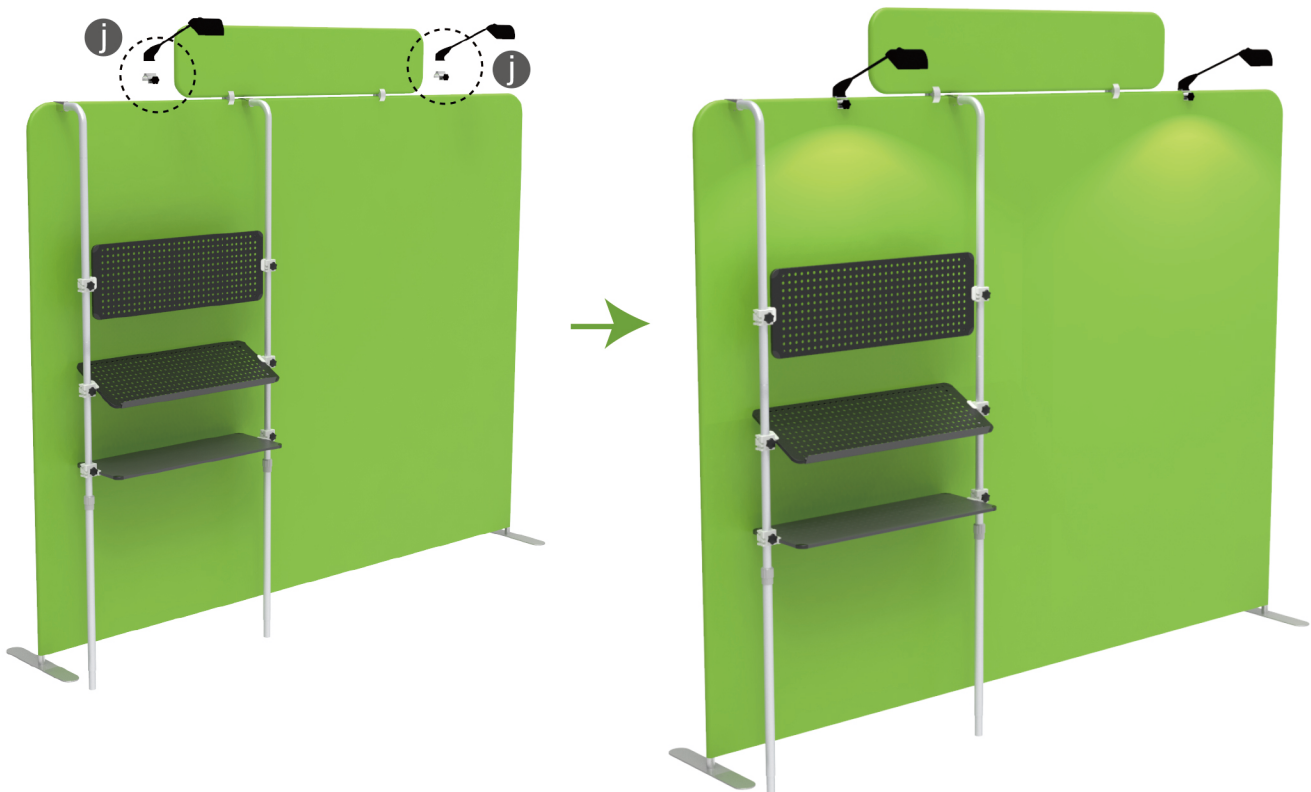
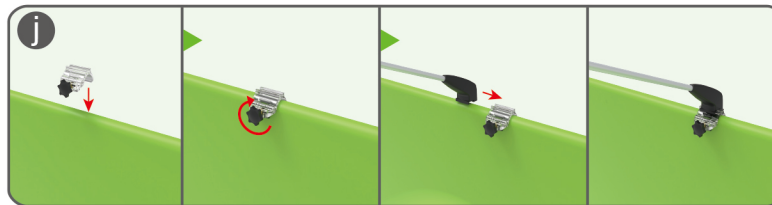
Clip into hanging boards based on directions of three-way clips & tightening with thumb screws, clip F-shaped bar onto hanging board with thumb screws.

STEPS

STEP 04 Interconnect display stands with C-shaped clips.



STEP 05 Screw light clips at top of display stands, slide lights onto them and adjust their direction.



10X10FT-BOOTH-D

STEPS

(1) Durable Plastic Hard Case, Aluminum Support Poles

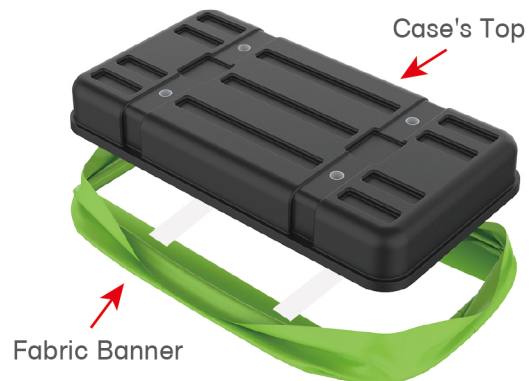


(2) Printed Graphic Fabric Banner



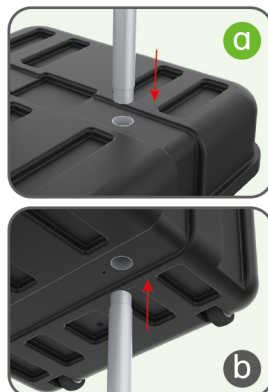
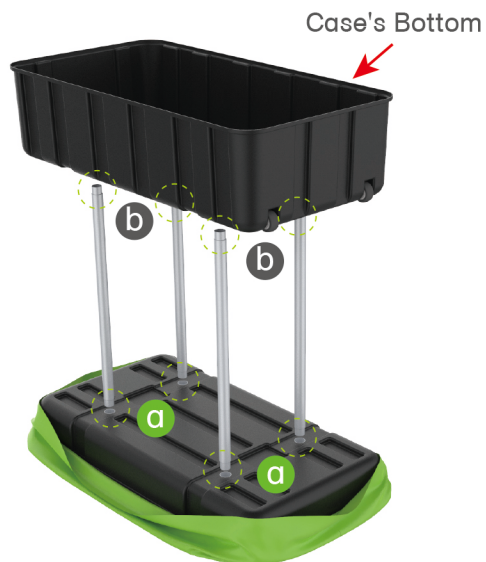
STEP 01

Put hard case's top into fabric banner.



STEP 02

Insert support poles into hard case's top & bottom.



STEPS

STEP 04

Wrap fabric banner from bottom to top & twist it to be smooth, lay hard case's intermediate panel on podium's top.



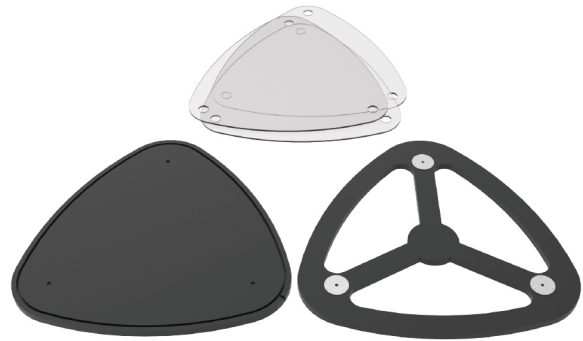
★ One Tool (Hex Wrench)

STEPS

(1) Straight Support Poles



(2) Top MDF Board, Bottom MDF Board, Acrylic Boards

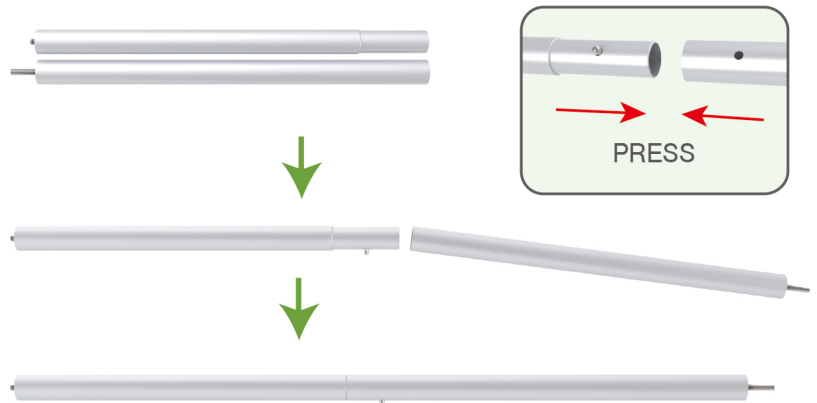


(3) Printed Graphic Fabric Banner



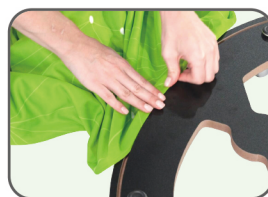
STEP 01

Connect straight support poles by pressing knobs to lock.



STEP 02

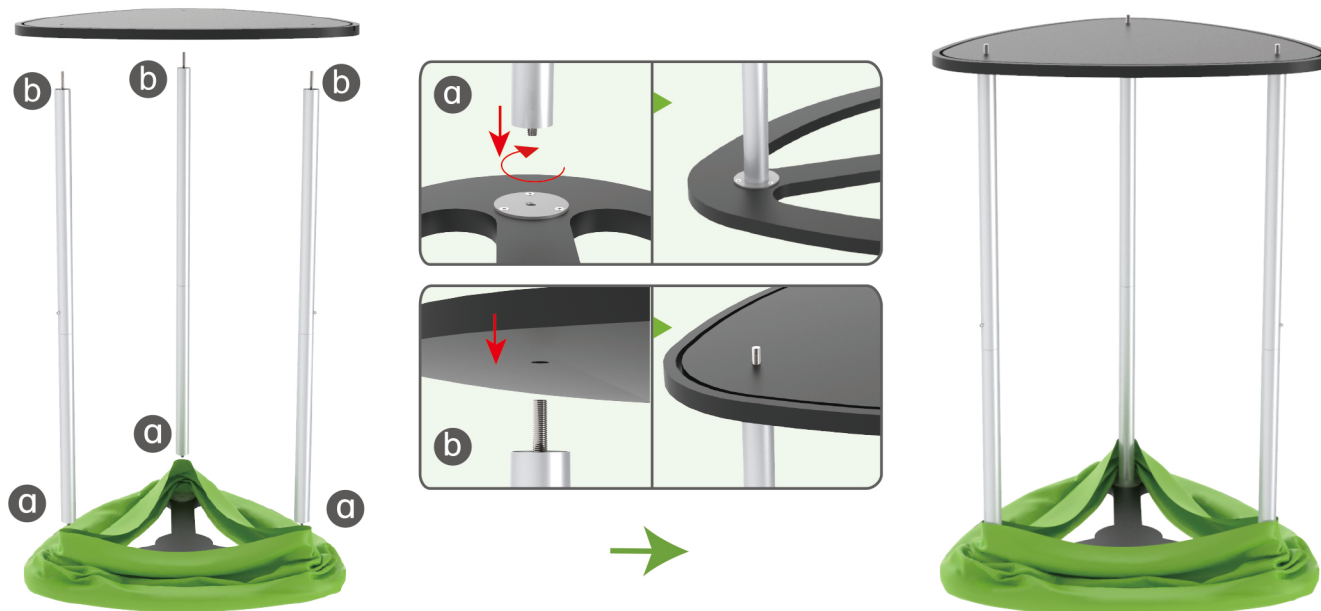
Insert fabric banner into bottom MDF board's slot and turn it over.



STEPS

STEP 03

Screw straight support poles in bottom MDF board's threaded holes and place top MDF board on them.



STEP 04

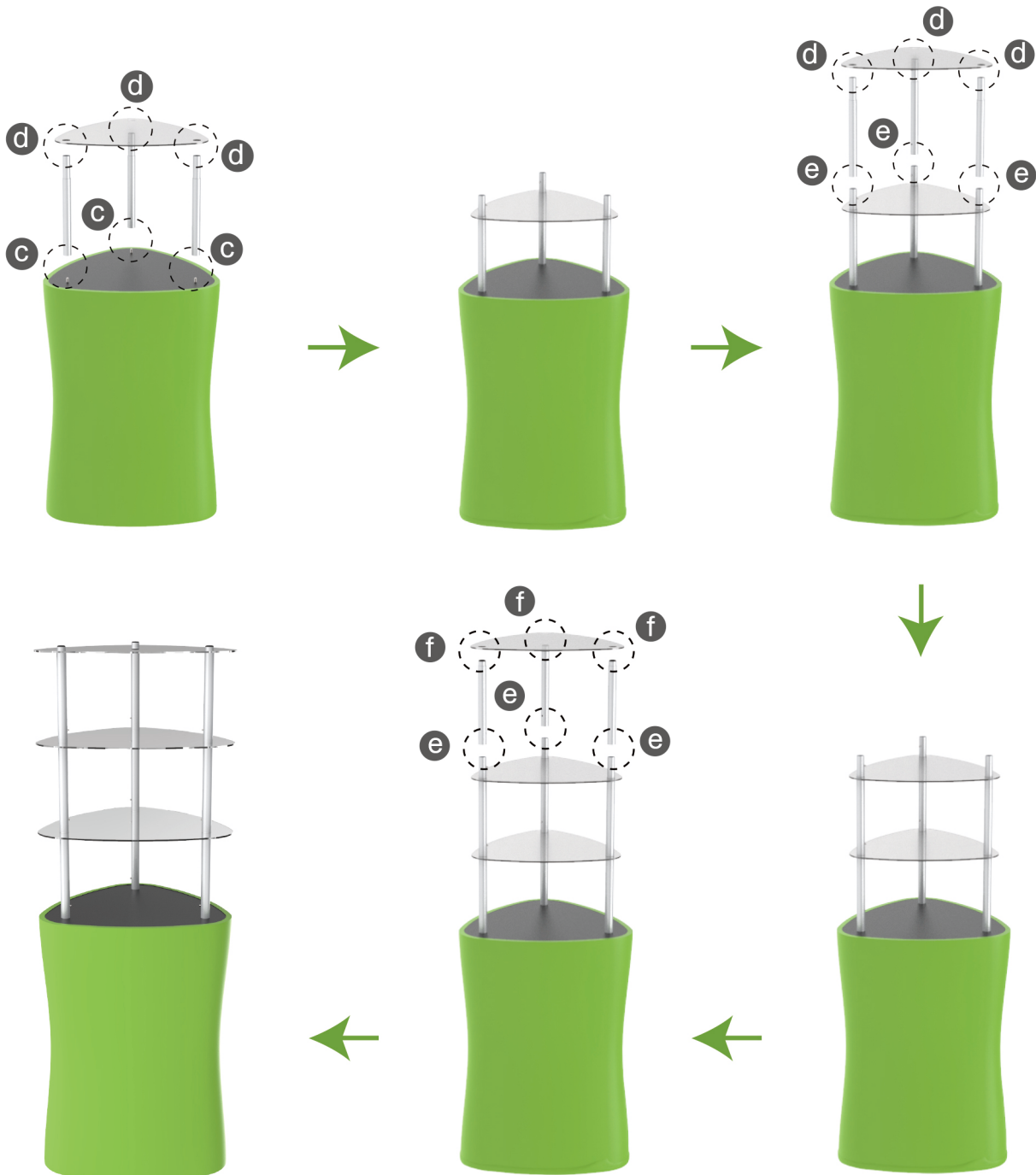
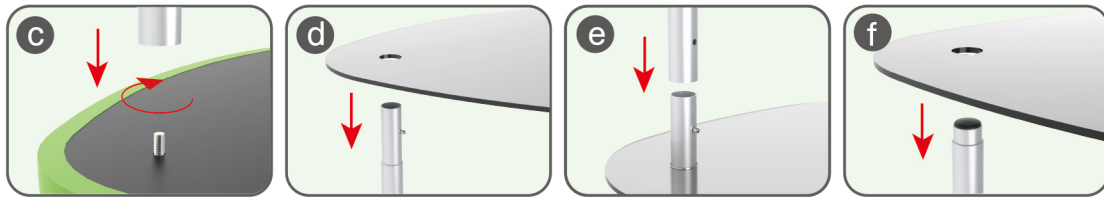
Pull fabric banner from bottom to top and insert into top MDF board's slot.



STEPS

STEP 05

Screw straight support poles with threaded holes filled onto nuts and place acrylic boards on them layer by layer.



STEPS



DT-S-02



DT-S-01



DT-S-03